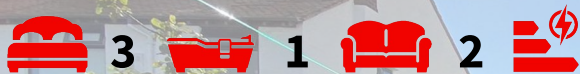




## 10 Asbury Road, Wallasey, CH45 8NJ Offers In The Region Of £315,000



A superb three bedroom semi detached family home that must be viewed! From the inviting hallway is the lounge area and to the rear of the property is a modern, open plan kitchen dining and entertaining space that opens out onto the large lawn garden from the two sets of patio doors. This superb space to the rear really makes this property stand out! Good size bedrooms, a family bathroom with bath and shower and all ready for you to move into. It has a driveway, garage and front garden to compliment. Overall a super family home!

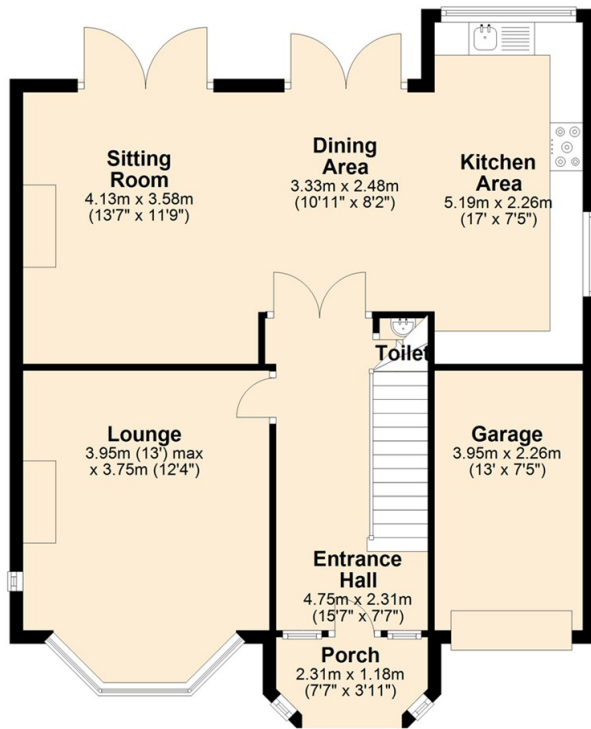
- Three Bedrooms
- Semi Detached House
- Lounge
- Open Plan Entertaining Area
- Upvc Double Glazing
- Gas Central Heating
- Off Road Parking
- Garage
- Greenleas School Catchment
- Great Family Home

### Viewing

To arrange a viewing on this property or require further information please contact one of our team on 0151 638 6313



## Ground Floor



This floorplan has been designed and completed by Bakewell & Horner.  
Plan produced using PlanUp.



Energy Efficiency Rating		
	Current	Potential
Very energy efficient - lower running costs		
(92 plus) <b>A</b>		
(81-91) <b>B</b>		
(69-80) <b>C</b>		
(55-68) <b>D</b>		
(39-54) <b>E</b>		
(21-38) <b>F</b>		
(1-20) <b>G</b>		
Not energy efficient - higher running costs		
<b>England &amp; Wales</b>		EU Directive 2002/91/EC



These particulars, whilst believed to be accurate are set out as a general outline only for guidance and do not constitute any part of an offer or contract. Intending purchasers should not rely on them as statements of representation of fact, but must satisfy themselves by inspection or otherwise as to their accuracy. No person in this firm's employment has the authority to make or give any representation or warranty in respect of the property.

**93-95 Wallasey Road, Wallasey, Merseyside, CH44 2AQ**  
**T. 0151 638 6313 | E. [management@bakewellhorner.co.uk](mailto:management@bakewellhorner.co.uk)**  
**<https://www.bakewellhorner.co.uk>**